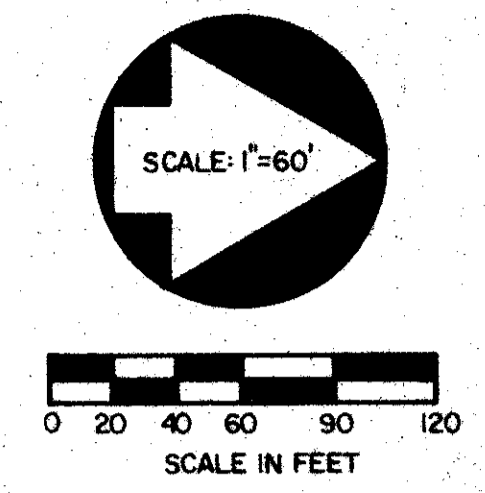


45/84

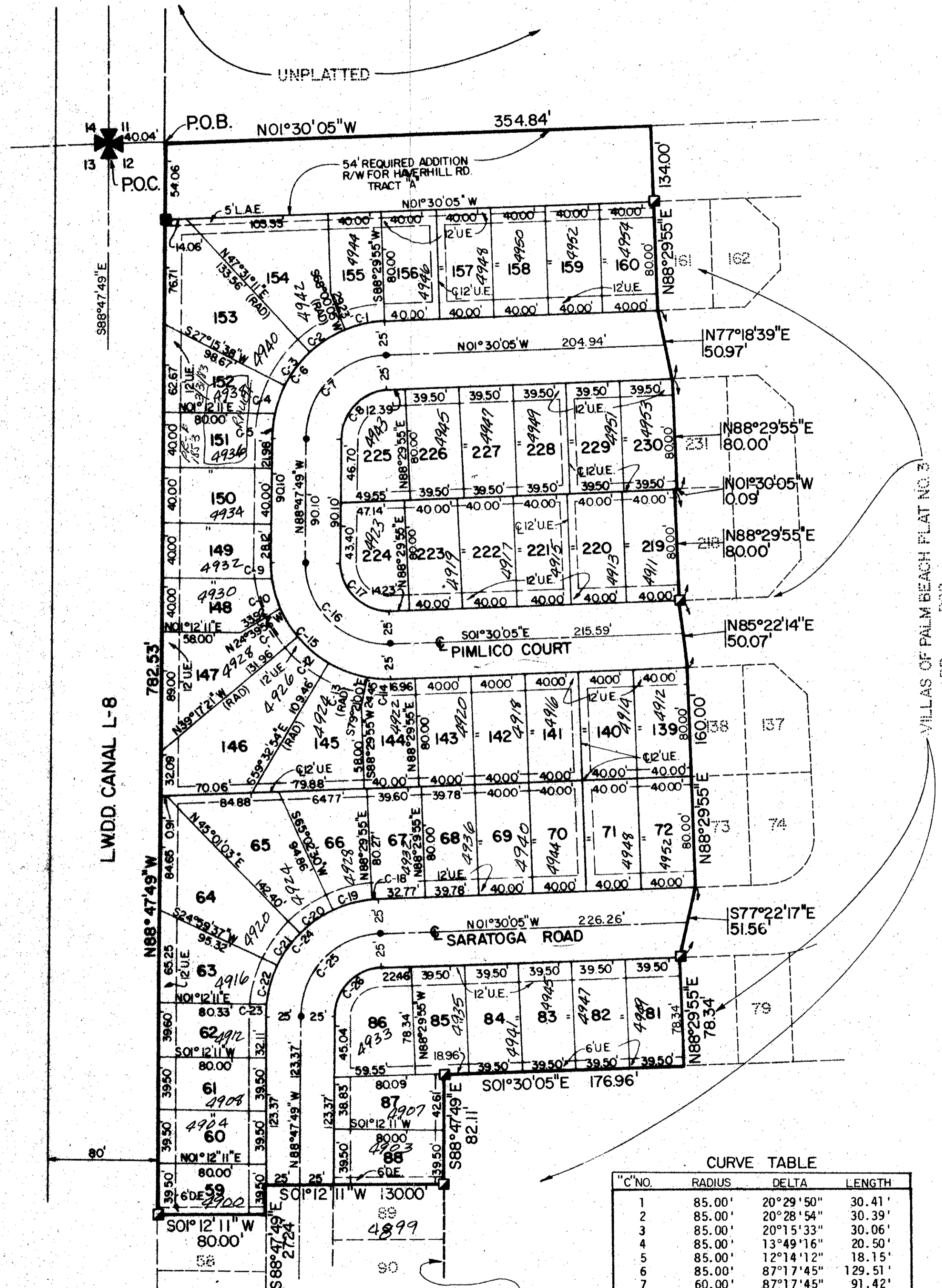
THE VILLAS OF PALM BEACH PLAT NO. 4

A PORTION OF THE SOUTHWEST ONE-QUARTER OF THE SOUTHWEST ONE-QUARTER OF SECTION 12, TOWNSHIP 44 SOUTH, RANGE 42 EAST, PALM BEACH COUNTY, FLORIDA.
 FEBRUARY, 1982 SHEET 2 OF 2

84



STATE OF FLORIDA
 COUNTY OF PALM BEACH
 THIS PLAT WAS FILED FOR RECORD AT THIS DAY OF AD. 1982 AND DULY RECORDED IN PLAT BOOK ON PAGES AND
 JOHN B. DUNKLE, CLERK
 CIRCUIT COURT
 BY: DC.



SURVEYOR'S NOTES

- ALL BEARINGS SHOWN HEREON ARE BASED ON THE WEST LINE OF SECTION 12, TOWNSHIP 44 SOUTH, RANGE 42 EAST, PALM BEACH COUNTY, FLORIDA, BEING N01°30'05"W.
- EASEMENTS ARE FOR PUBLIC UTILITIES UNLESS OTHERWISE NOTED.
- U.E. DENOTES UTILITY EASEMENT.
D.E. DENOTES DRAINAGE EASEMENT.
- THERE SHALL BE NO BUILDINGS OR ANY KIND OF CONSTRUCTION OR TREES OR SHRUBS PLACED ON DRAINAGE EASEMENTS.
- THERE SHALL BE NO BUILDINGS OR OTHER PERMANENT STRUCTION PLACED ON UTILITY EASEMENTS.
- BUILDING SET BACK LINES SHALL BE AS REQUIRED BY CURRENT PALM BEACH COUNTY ZONING REGULATIONS.
- PERMANENT REFERENCE MONUMENTS DESIGNATED THUS:
- PERMANENT CONTROL POINTS DESIGNATED THUS:
- EXISTING P.R.M.'S (P.L.S. NO.3182) DESIGNATED THUS:

CURVE TABLE

C'NO.	RADIUS	DELTA	LENGTH
1	85.00'	20°29'50"	30.41'
2	85.00'	20°28'54"	30.39'
3	85.00'	20°15'33"	30.06'
4	85.00'	13°49'16"	20.50'
5	85.00'	12°14'12"	18.15'
6	85.00'	8°17'45"	12.95'
7	60.00'	8°17'45"	9.14'
8	35.00'	8°17'45"	5.33'
9	85.00'	08°02'13"	11.92'
10	85.00'	17°49'54"	26.45'
11	85.00'	14°37'23"	21.69'
12	85.00'	20°15'33"	30.06'
13	85.00'	19°48'06"	29.38'
14	85.00'	12°09'05"	18.03'
15	85.00'	92°42'15"	137.53'
16	60.00'	92°42'15"	97.08'
17	35.00'	92°42'15"	56.63'
18	85.00'	04°36'35"	6.84'
19	85.00'	18°50'50"	27.96'
20	85.00'	20°01'27"	29.71'
21	85.00'	20°01'27"	29.71'
22	85.00'	18°44'01"	27.78'
23	85.00'	05°03'26"	7.50'
24	85.00'	8°17'45"	12.95'
25	60.00'	8°17'45"	9.14'
26	35.00'	8°17'45"	5.33'

TURNOUT REQUIRED

12-44-42
 0328-303
 45/84

Meridian Surveying and mapping inc.
 WEST PALM BEACH, FLORIDA

DATE	JULY 1981
SCALE	1"=60'
DRAWING NO.	79-P-172

THE VILLAS OF PALM BEACH PLAT NO. 4